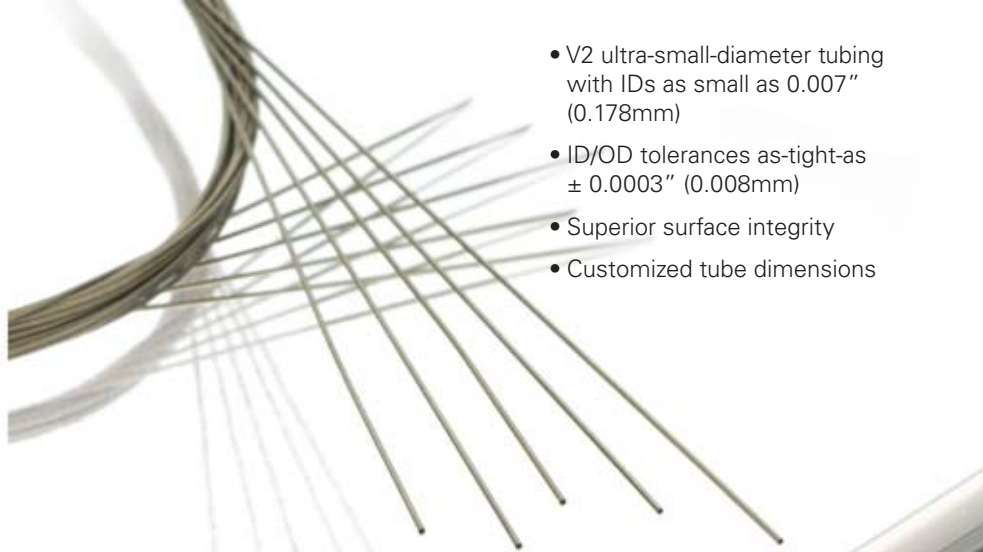


superelastic tubing

SAES Memry's Superelastic Nitinol Tubing exhibits properties that expand design capabilities for finished medical devices and ensure the highest degree of quality and performance for end use applications. Our state-of-the-art manufacturing process produces tubing with optimal properties, including flexibility, kink-resistance, a low permanent set and high loading and unloading plateau stresses between 15°C and 50°C.

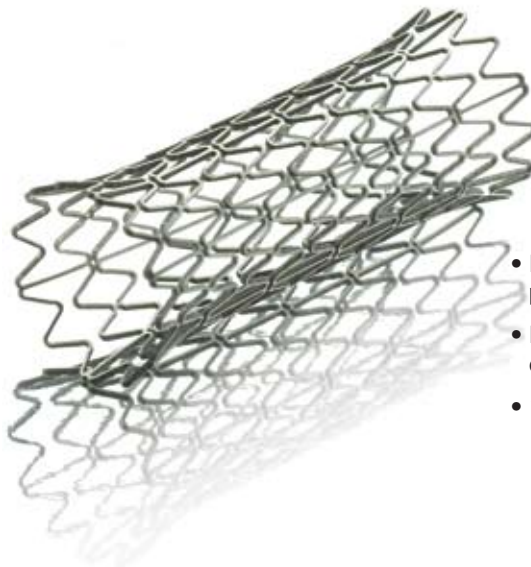
Our Nitinol tubing is ideally suited for applications requiring low-profile, highly flexible shafts while maintaining column strength, pushability and torqueability. Our customers have utilized the performance advantages of SAES Memry Nitinol tubing as a dynamic technology in applications such as stents, catheters, delivery systems, guides, needles, MRI instruments and surgical instruments.



- V2 ultra-small-diameter tubing with IDs as small as 0.007" (0.178mm)
- ID/OD tolerances as-tight-as ± 0.0003 " (0.008mm)
- Superior surface integrity
- Customized tube dimensions



- Uniform strut thickness after laser cut
- No expansion required for certain end use applications
- 30:1 maximum OD/wall ratio



- Laser cut tubing for coronary and peripheral self-expanding stents
- Mechanical, chemical, electro-chemical surface finishing options
- 100% visual inspection

saes
getters

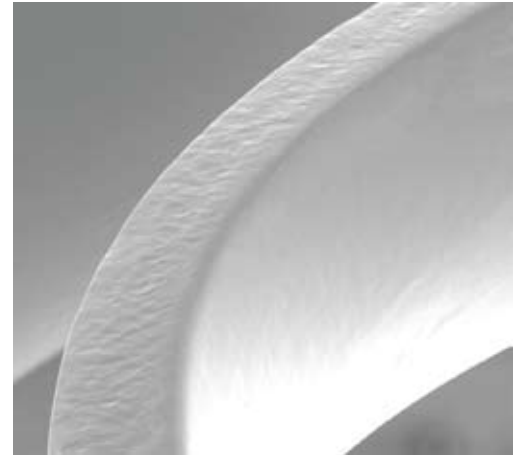


MEMRY[®]

www.memry.com

highly flexible kink-resistant nickel titanium

	Superelastic
Alloys	BB
As (fully annealed) [°C]	-15
Typical loading plateau stress @ 3% strain, in Austenite	500 MPa 72,500 psi
Typical Ultimate Tensile Strength in Austenite	1250 MPa 181,000 psi
Max. residual elongation after 8% strain in Austenite [%]	0.5
Min. elongation to failure in Austenite [%]	10
Main applications	Stents, Delivery Systems, Guides, Needles, MRI Instruments, Sheaths, Surgical Instruments



SEM image of laser cut tube form with electropolish finish

Common Characteristics

Size range: From .010" (0.254mm) to .394" (10mm) OD	Mechanical treatments: - Superelastic
Surface finish: <ul style="list-style-type: none"> - Dark oxide - Drawn Bright - Centerless ground - Acid cleaned 	Typical Impurity Content : <ul style="list-style-type: none"> - O < 250 ppm - C < 250 ppm - Total all others < 1000 ppm
All tubes are cut to specific length	

3 Berkshire Boulevard
Bethel, CT 06801
Tel: +12037391100
Fax: +12037986363

4065 Campbell Avenue
Menlo Park, CA 94025
Tel: +16504633400
Fax: +16504633456

Am Kesselhaus 5
79576 Weil am Rhein, Germany
Tel: +497621799121
Fax: +497621799244