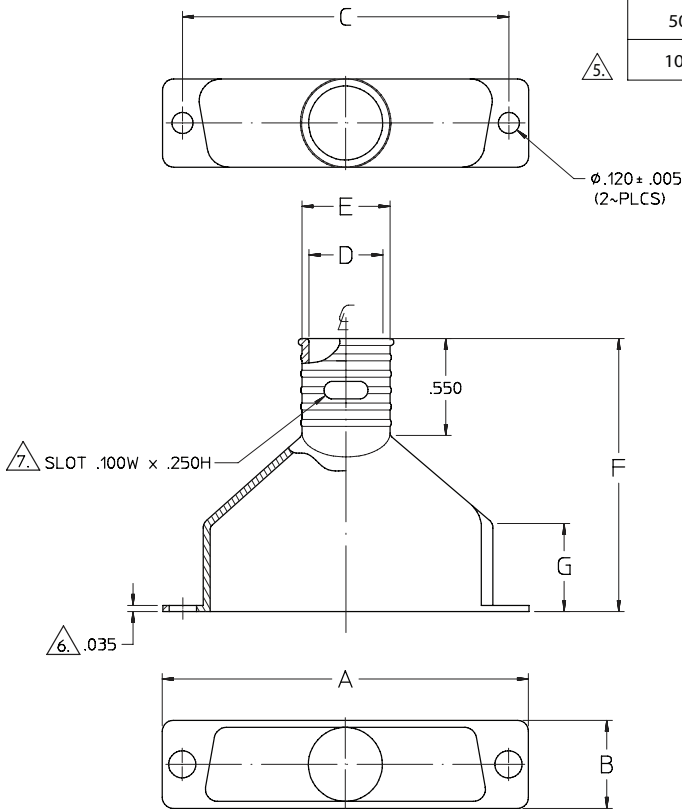


Rectangular Accessories Solid D-Subs



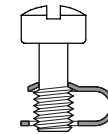
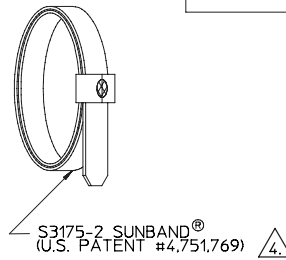
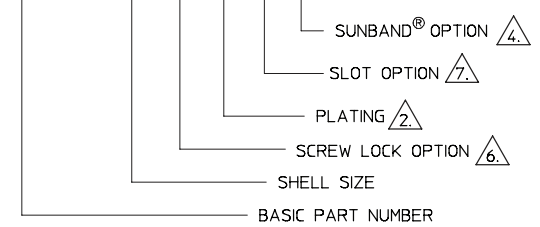
Web link to Sunbank
www.sunbankcorp.com

SHELL SIZE	A ±.015 DIM	B ±.020 DIM	C ±.005 DIM	D ±.010 DIA	E ±.015 DIA	F ±.030 DIM	G ±.010 DIM
9	1.203	.500	.984	.270	.350	1.190	.440
15	1.531	.500	1.312	.395	.475	1.270	.440
25	2.078	.500	1.852	.420	.500	1.550	.500
37	2.718	.500	2.500	.420	.500	1.690	.500
50	2.625	.609	2.406	.529	.609	1.670	.440
104	2.730	.670	2.500	.573	.653	1.690	.500



EXAMPLE PART NUMBER

J1587 - 37 - 12 - 1



MALE SCREW LOCK HARDWARE $\triangle 6$

NOTES:

- IDENTIFIED PER MIL-STD-130.
- $\triangle 2$ INSERT PLATING CODE NUMBER FOR FINISH REQUIRED.
- MATERIAL: ALUMINUM ALLOY PER QQ-A-225 OR QQ-A-591.
- $\triangle 4$ INSERT ONE OF THE FOLLOWING DESIGNATORS TO DEFINE TO SUNBAND® OPTION REQUIREMENTS:
"1" - FOR NO SUNBAND® SUPPLIED.
"2" - FOR SUNBAND® SUPPLIED.
(CONSULT FACTORY FOR INSTALLATION TOOLS)
- $\triangle 5$ '104' CONFIGURATION TO MATE WITH 104 PIN 'COMPACT D' CONNECTORS, SHELL SIZE 'F'.
- $\triangle 6$ INSERT ONE OF THE FOLLOWING DESIGNATORS TO DEFINE THE SCREW LOCK OPTION REQUIRED.
"- " - FOR NO SCREW LOCK SUPPLIED
"S" - FOR SCREW LOCK SUPPLIED
"H" - FOR .060 THICK FLANGE, NO SCREW LOCK SUPPLIED
"F" & "G" DIMENSIONS WILL INCREASE BY .025.
- $\triangle 7$ REPLACE THE "-" WITH AN "S" TO RECEIVE SLOTTED SHIELD TERMINATION PLATFORM.
ONE SLOT IS PROVIDED FOR SHELL SIZES 9 & 15
TWO SLOTS, 180° APART, ARE PROVIDED ON SHELL SIZES 25 AND ABOVE

$\triangle 2$	PLATING LEGEND
CODE NUMBER	FINISH
03	CADMIUM PLATE, YELLOW, PER QQ-P-416, TYPE II, CLASS 3.
04	CADMIUM PLATE, OLIVE DRAB, PER QQ-P-416, TYPE II, CLASS 3.
10	CADMIUM PLATE, BLACK, PER QQ-P-416, TYPE II, CLASS 3.
12	ELECTROLESS NICKEL PER MIL-C-26074, CLASS 3 OR 4, GRADE B.
34	CADMIUM PLATE, OLIVE DRAB, PER MIL-C-85049, FINISH W.

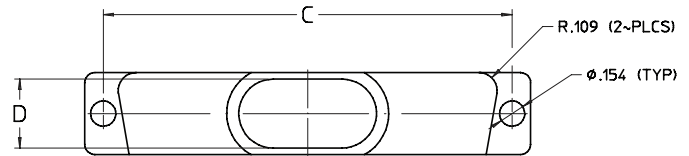
Rectangular Accessories

J1589 - LIGHTWEIGHT, BAND TERMINATION FOR MIL-C-24308 "D-SUB" CONNECTORS

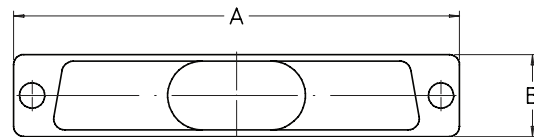
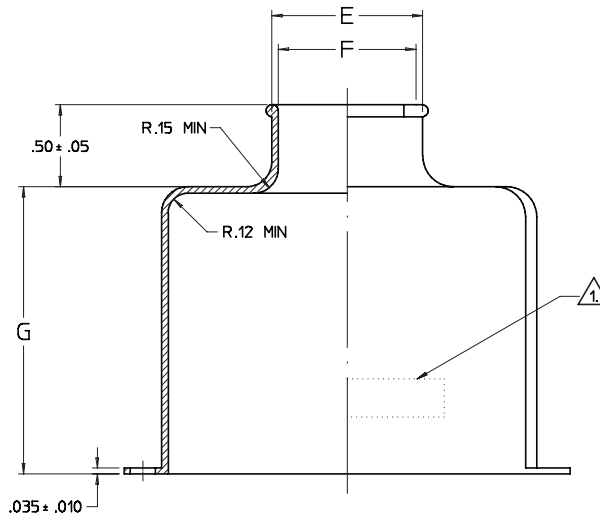
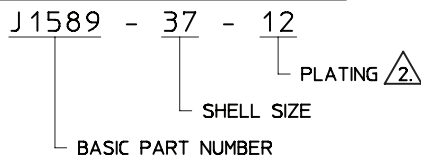


Web link to Sunbank
www.sunbankcorp.com

SHELL SIZE	A ±.020 DIM	B ±.015 DIM	C ±.005 DIM	D ±.015 DIM	E ±.015 DIA	F ±.010 DIA	G +.100 -.000 DIM
9	1.203	.500	.984	.270	.620	.540	.750
15	1.531	.500	1.312	.395	.870	.790	.750
25	2.078	.500	1.852	.420	.920	.840	.870
37	2.718	.500	2.500	.420	.920	.840	1.120
50	2.625	.609	2.406	.529	1.138	1.058	1.120



EXAMPLE PART NUMBER



\triangle CODE NUMBER	PLATING LEGEND FINISH
03	CADMIUM PLATE, YELLOW, PER QQ-P-416, TYPE II, CLASS 3.
04	CADMIUM PLATE, OLIVE DRAB, PER QQ-P-416, TYPE II, CLASS 3.
10	CADMIUM PLATE, BLACK, PER QQ-P-416, TYPE II, CLASS 3.
12	ELECTROLESS NICKEL PER MIL-C-26074, CLASS 3 OR 4, GRADE B.
34	CADMIUM PLATE, OLIVE DRAB, PER MIL-C-85049, FINISH W.

3. MATERIAL: ALUMINUM ALLOY PER QQ-A-200/8 OR QQ-A-591.

$\triangle 2$ INSERT PLATING CODE NUMBER FOR FINISH REQUIRED. OMIT FOR STANDARD ELECTROPLATED GOLD PER MIL-G-45204 TYPE II, CLASS 1 MIN, OVER NICKEL FLASH.

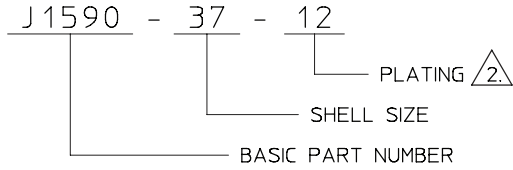
$\triangle 1$ IDENTIFIED PER MIL-STD-130.

NOTES:

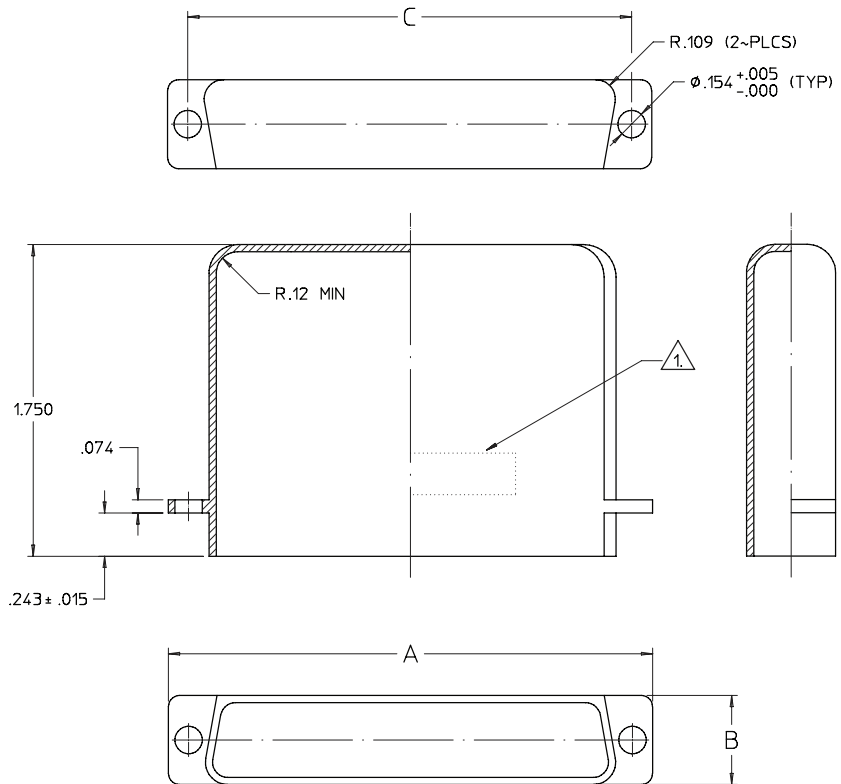


Web link to Sunbank
www.sunbankcorp.com

EXAMPLE PART NUMBER



SHELL SIZE	A ± 0.015 DIM	B ± 0.015 DIM	C ± 0.005 DIM
9	1.203	.500	.984
15	1.531	.500	1.312
25	2.078	.500	1.852
37	2.718	.500	2.500
50	2.625	.609	2.406



$\triangle 2$ PLATING LEGEND	
CODE NUMBER	FINISH
03	CADMIUM PLATE, YELLOW, PER QQ-P-416, TYPE II, CLASS 3.
04	CADMIUM PLATE, OLIVE DRAB, PER QQ-P-416, TYPE II, CLASS 3.
10	CADMIUM PLATE, BLACK, PER QQ-P-416, TYPE II, CLASS 3.
12	ELECTROLESS NICKEL PER MIL-C-26074, CLASS 3 OR 4, GRADE B.
34	CADMIUM PLATE, OLIVE DRAB, PER MIL-C-85049, FINISH W.

3. MATERIAL: ALUMINUM ALLOY PER QQ-A-200/8 OR QQ-A-591.

$\triangle 2$. INSERT PLATING CODE NUMBER FOR FINISH REQUIRED.

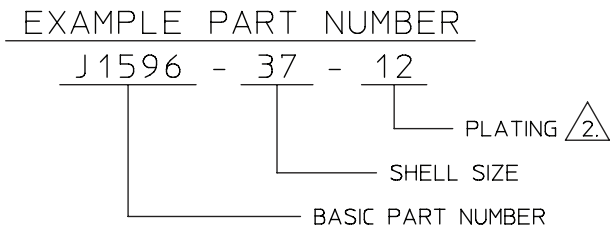
$\triangle 1$. IDENTIFIED PER MIL-STD-130.

NOTES:

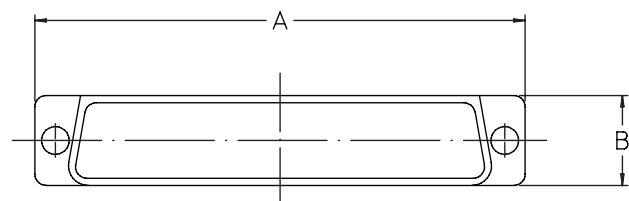
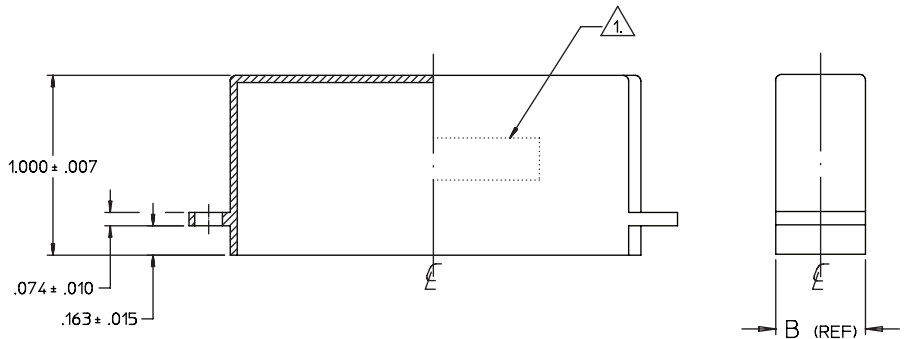
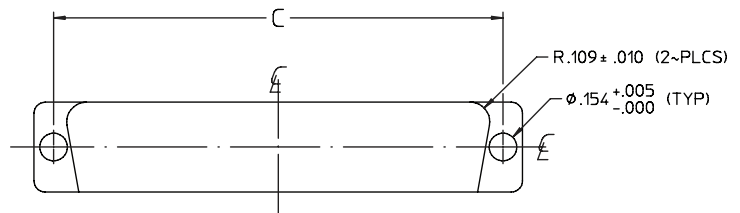
Rectangular Accessories

J1596 - LIGHTWEIGHT FOR MIL-C-24308 "D-SUB" CONNECTORS

Web link to Sunbank
www.sunbankcorp.com



SHELL SIZE	A $\pm .015$ DIM	B $\pm .015$ DIM	C $\pm .005$ DIM
9	1.203	.500	.984
15	1.531	.500	1.312
25	2.078	.500	1.852
37	2.718	.500	2.500
50	2.625	.609	2.406



PLATING LEGEND	
CODE NUMBER	FINISH
03	CADMIUM PLATE, YELLOW, PER QQ-P-416, TYPE II, CLASS 3.
04	CADMIUM PLATE, OLIVE DRAB, PER QQ-P-416, TYPE II, CLASS 3.
10	CADMIUM PLATE, BLACK, PER QQ-P-416, TYPE II, CLASS 3.
12	ELECTROLESS NICKEL PER MIL-C-26074, CLASS 3 OR 4, GRADE B.
34	CADMIUM PLATE, OLIVE DRAB, PER MIL-C-85049, FINISH W.

NOTES:

- IDENTIFIED PER MIL-STD-130.
- $\triangle 2$ INSERT PLATING CODE NUMBER FOR FINISH REQUIRED. OMIT FOR STANDARD ELECTROPLATED GOLD PER MIL-G-45204 OVER NICKEL FLASH.
- $\triangle 3$ MATERIAL: DUSTCAP - ALUMINUM ALLOY PER QQ-A-200, QQ-Q-225 OR QQ-A-591.



Web link to Sunbank
www.sunbankcorp.com

EXAMPLE PART NUMBER

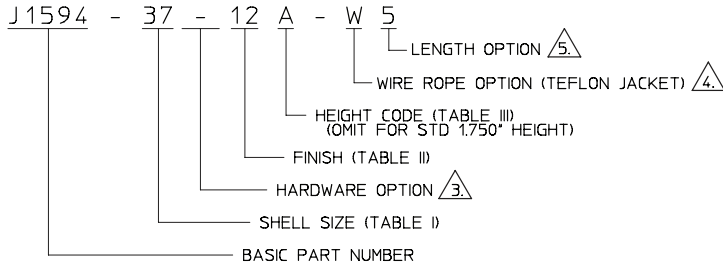


TABLE I

SHELL SIZE	A ±.015 DIM	B ±.015 DIM	C ±.005 DIM
9	1.203	.500	.984
15	1.531	.500	1.312
25	2.078	.500	1.852
37	2.718	.500	2.500
50	2.625	.609	2.406

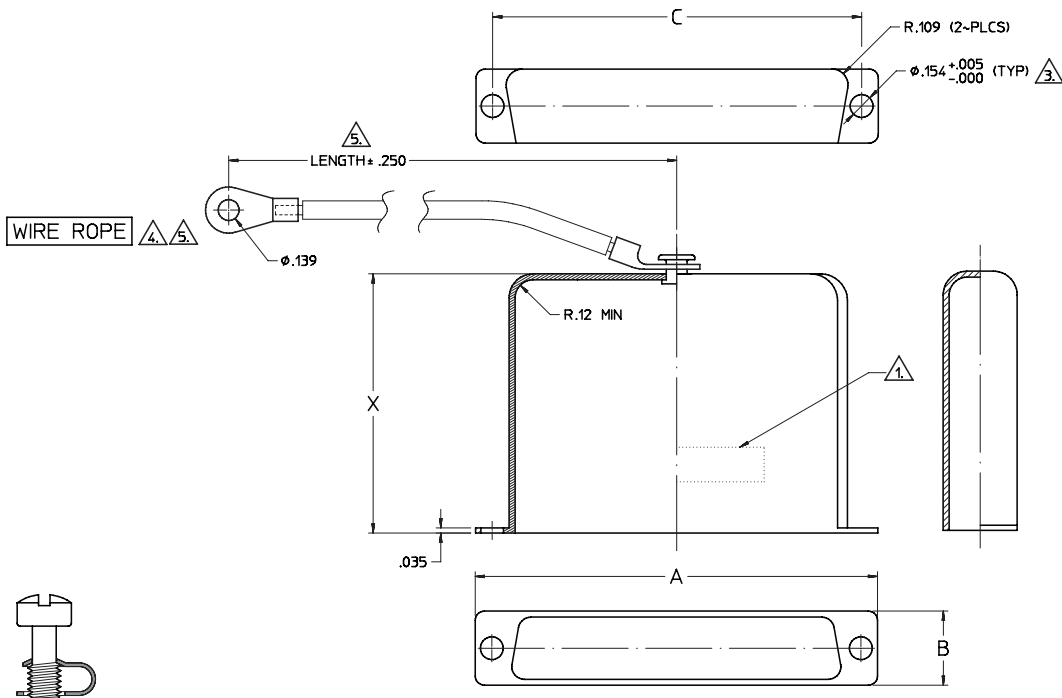
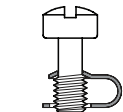
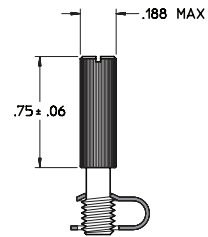


TABLE III

HEIGHT CODE	X ±.031 DIM
A	.750
B	1.000
C	1.250
D	1.500



MALE SCREW LOCK HARDWARE (3)



MALE JACK POST HARDWARE (3)

NOTES:

- IDENTIFIED PER MIL-STD-130.
- MATERIAL / FINISH: BACKSHELL - ALUMINUM ALLOY PER QQ-A-200/8 OR QQ-A-591 / SEE TABLE II (OMIT FOR STANDARD ELECTROPLATED GOLD PER MIL-G-45204 OVER ELECTROLESS NICKEL PER MIL-C-26074, CLASS 4, GRADE A)
HARDWARE: CLIP - SHEET STEEL / CADMIUM PLATE, YELLOW
SCREW OR JACKPOST - COLD ROLLED STEEL / CADMIUM PLATE, YELLOW
- INSERT ONE OF THE FOLLOWING DESIGNATORS TO DEFINE THE SCREW LOCK OPTION REQUIRED.
"-" - FOR NO HARDWARE SUPPLIED, BACKSHELL SUPPLIED WITH ϕ .154 HOLE.
"P" - FOR JACK POST HARDWARE SUPPLIED, BACKSHELL SUPPLIED WITH ϕ .120 HOLE.
"S" - FOR SCREW LOCK SUPPLIED, BACKSHELL SUPPLIED WITH ϕ .120 HOLE.
"T" - FOR BACKSHELL SUPPLIED WITH 4-40 TAPPED HOLES AND MOUNTING FLANGE OF .063 THICK
- OPTIONAL WIRE ROPE ATTACHMENT (ADD "-W", OMIT FOR NONE)
- ATTACHMENT LENGTH OPTION. INSERT LENGTH IN INCHES (1 INCH INCREMENTS, 5 INCH MIN)

TABLE II

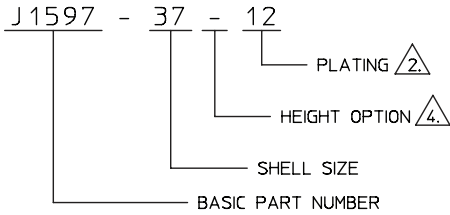
CODE NUMBER	FINISH
03	CADMIUM PLATE, YELLOW, PER QQ-P-416, TYPE II, CLASS 3.
04	CADMIUM PLATE, OLIVE DRAB, PER QQ-P-416, TYPE II, CLASS 3.
10	CADMIUM PLATE, BLACK, PER QQ-P-416, TYPE II, CLASS 3.
12	ELECTROLESS NICKEL PER MIL-C-26074, CLASS 3 OR 4, GRADE B.
34	CADMIUM PLATE, OLIVE DRAB, PER MIL-C-85049, FINISH W.

Rectangular Accessories

J1597 - POTTING CUP LIGHTWEIGHT FOR MIL-C-24308 "D-SUB" CONNECTORS

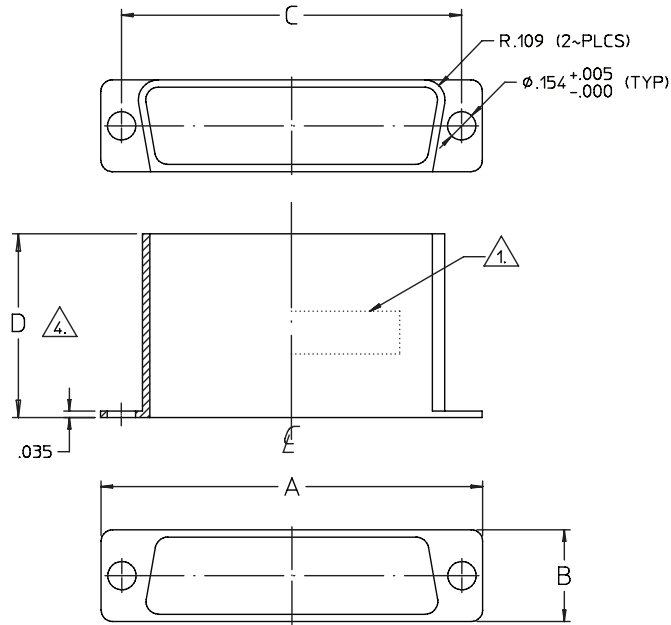
Web link to Sunbank
www.sunbankcorp.com

EXAMPLE PART NUMBER



SHELL SIZE	A ±.015 DIM	B ±.015 DIM	C ±.005 DIM
9	1.203	.500	.984
15	1.531	.500	1.312
25	2.078	.500	1.852
37	2.718	.500	2.500
50	2.625	.609	2.406

HEIGHT CODE	D ±.030 DIM
A	.400
B	.500
C	.600
D	.700
E	.800
F	.900
-	1.000



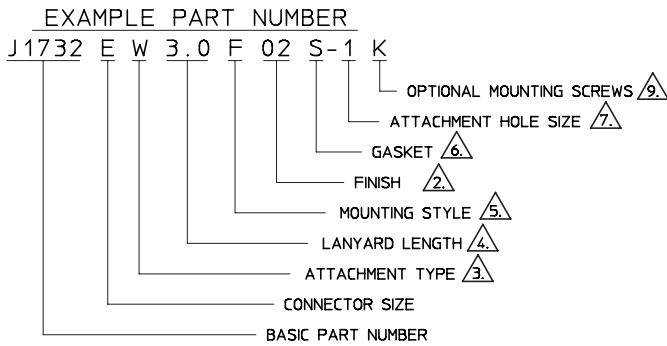
2	PLATING LEGEND
CODE NUMBER	FINISH
03	CADMIUM PLATE, YELLOW, PER QQ-P-416, TYPE II, CLASS 3.
04	CADMIUM PLATE, OLIVE DRAB, PER QQ-P-416, TYPE II, CLASS 3.
10	CADMIUM PLATE, BLACK, PER QQ-P-416, TYPE II, CLASS 3.
12	ELECTROLESS NICKEL PER MIL-C-26074, CLASS 3 OR 4, GRADE B.
34	CADMIUM PLATE, OLIVE DRAB, PER MIL-C-85049, FINISH W.

- 4. INSERT HEIGHT CODE FOR HEIGHT REQUIRED.
- 3. MATERIAL: ALUMINUM ALLOY PER QQ-A-200/8 OR QQ-A-591.
- 2. INSERT PLATING CODE NUMBER FOR FINISH REQUIRED. OMIT FOR STANDARD ELECTROPLATED GOLD PER MIL-G-45204 OVER NICKEL FLASH.
- 1. IDENTIFIED PER MIL-STD-130.

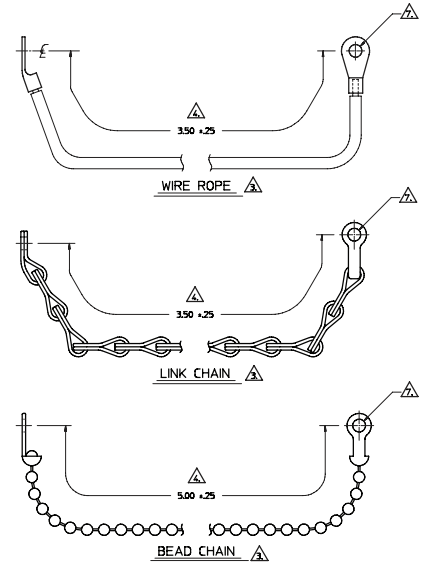
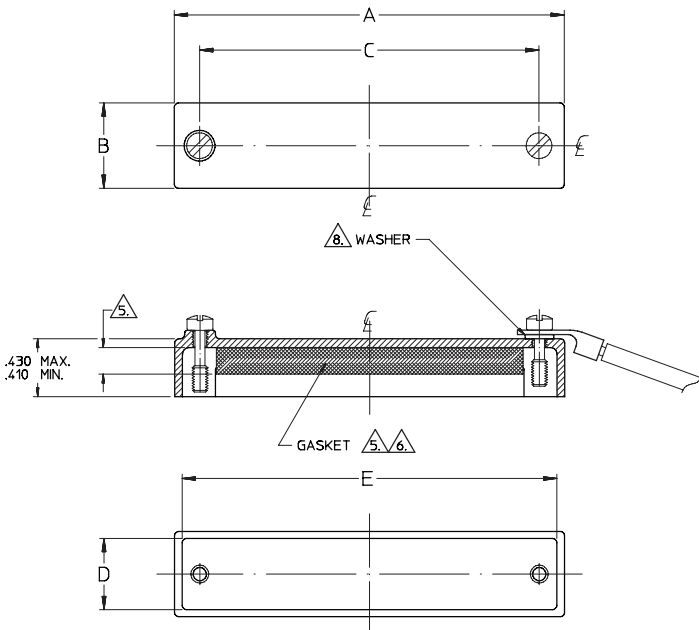
NOTES:



Web link to Sunbank
www.sunbankcorp.com



CONNECTOR SIZE	A ±.015 DIM	B ±.015 DIM	C DIM	D ±.010 DIM	E ±.015 DIM
A	1.661	.494	1.312	.380	1.561
B	2.208	.494	1.852	.380	2.108
C	2.849	.494	2.500	.398	2.749
D	2.770	.605	2.406	.504	2.655
E	1.333	.494	.984	.380	1.233



NOTES:

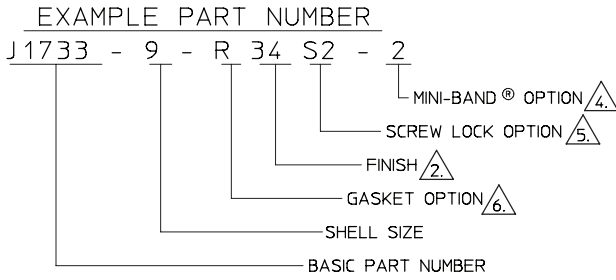
1. ASSEMBLY IDENTIFIED PER MIL-STD-130.
- ² MATERIAL / FINISH: ADAPTER COMPONENTS - ALUMINUM ALLOY / SEE PLATING LEGEND
GASKET - NEOPRENE / N/A
HARDWARE - SST / PASSIVATED
BEAD CHAIN - BRASS / NICKEL PLATED
WIRE ROPE - SST (PVC COATED) / N/A
LINK CHAIN - SST / PASSIVATED
- ³ INSERT ONE OF THE FOLLOWING LETTER DESIGNATORS TO DEFINE THE ATTACHMENT TYPE REQUIRED:
"N" FOR NO ATTACHMENT
"B" FOR BEAD CHAIN ATTACHMENT
"C" FOR LINK CHAIN ATTACHMENT
"W" FOR WIRE ROPE ATTACHMENT
- ⁴ LANYARD LENGTH TO BE SPECIFIED BY THE CUSTOMER IN .5 INCH INCREMENTS (2.0 INCH MINIMUM LENGTH) OMIT FOR STANDARD 3.5 INCH LENGTH.
- ⁵ INSERT ONE OF THE FOLLOWING LETTER DESIGNATORS FOR THE MOUNTING STYLE REQUIRED:
"F" FOR FRONT MOUNTING STYLE SUPPLIED WITH .188 THICK GASKET
"B1" FOR BACK MOUNTING STYLE (.062 PANEL) SUPPLIED WITH .250 THICK GASKET
"B2" FOR BACK MOUNTING STYLE (.125 PANEL WITH .062 RECESS) SUPPLIED WITH .312 THICK GASKET
"B3" FOR BACK MOUNTING STYLE (.093 WITH .032 RECESS) SUPPLIED W/.281 THICK GASKET.
- ⁶ INSERT ONE OF THE FOLLOWING LETTER DESIGNATORS FOR THE GASKET MATERIAL REQUIRED:
"R" FOR CONDUCTIVE SILICONE GASKET
"S" FOR SILICONE GASKET
(OMIT FOR STANDARD NEOPRENE)
- ⁷ INSERT "-1" FOR ATTACHMENT HOLE TO BE ø.183/.198, OMIT FOR STANDARD ø.138/.149
- ⁸ WASHER SUPPLIED WITH "B" AND "W" ATTACHMENT OPTIONS ONLY.
9. INSERT THE FOLLOWING LETTER DESIGNATOR FOR MOUNTING SCREWS:
"K" FOR SLOTTED KNURLED HEAD SCREW
(OMIT FOR STANDARD SLOTTED FILLISTER HEAD SCREW)

PLATING LEGEND	
CODE NUMBER	FINISH
01	IRIDITE, NO. 14-2, YELLOW
02	CADMIUM PLATE, CLEAR
03	CADMIUM PLATE, YELLOW/GOLD
04	CADMIUM PLATE, OLIVE DRAB
12	ELECTROLESS NICKEL
34	CADMIUM PLATE, OLIVE DRAB, OVER ELECTROLESS NICKEL

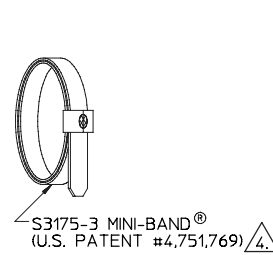
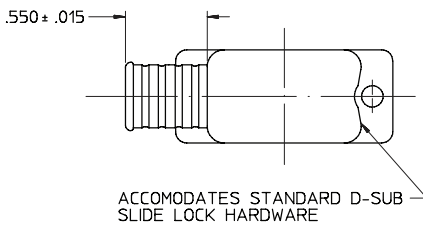
Rectangular Accessories

J1733 - 90 Deg. LIGHTWEIGHT, MINI-BAND TERMINATION

Web link to Sunbank
www.sunbankcorp.com

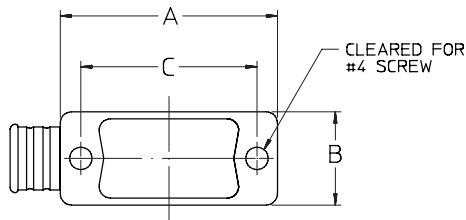
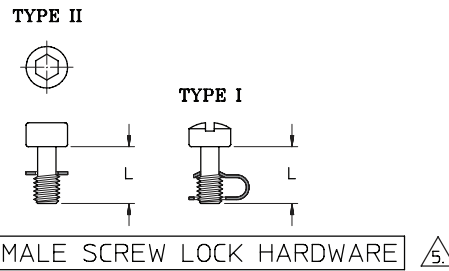
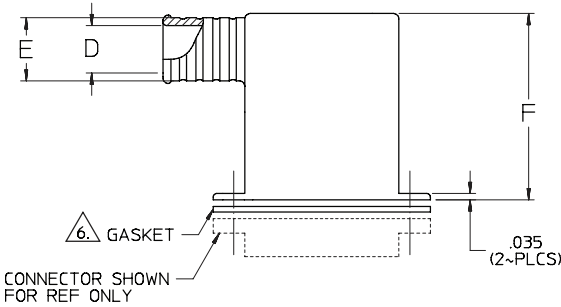


SHELL SIZE	A ±.015 DIM	B ±.020 DIM	C ±.005 DIM	D ±.015 DIA	E ±.015 DIA	F ±.015 DIM
9	1.203	.520	.984	.270	.350	1.000
15	1.531	.520	1.312	.395	.475	1.125
25	2.078	.520	1.852	.420	.500	1.188
37	2.718	.520	2.500	.420	.500	1.188
50	2.625	.629	2.406	.529	.609	1.312
104	2.730	.690	2.500	.573	.653	1.312



^{5.}

OPTION NUMBER	L DIM	TYPE
S2	.220	I
S3	.295	I
S4	.220	II
S5	.295	II



^{2.} PLATING LEGEND	
CODE NUMBER	FINISH
4	CADMIUM PLATE, OLIVE DRAB
12	ELECTROLESS NICKEL
34	CADMIUM PLATE, OLIVE DRAB OVER ELECTROLESS NICKEL

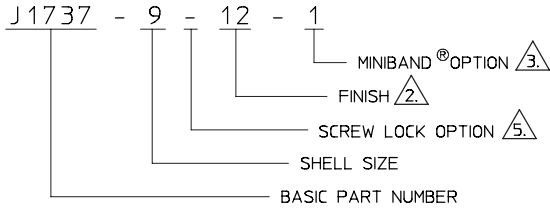
NOTES:

- ASSEMBLY IDENTIFIED PER MIL-STD-130.
- ^{2.} MATERIAL / FINISH: BACKSHELL - ALUMINUM ALLOY / SEE PLATING LEGEND
MINIBAND® - SST / PASSIVATED
RFI GASKET - MONEL & NEOPRENE / N/A
SCREW LOCK CLIP - SST / N/A
SCREW LOCK SCREW - STEEL / YELLOW CHROMATE
- ^{3.} MATES TO: MIL-C-24308 D-SUB MINIATURE CONNECTORS (SHELL SIZE 9 ONLY)
- ^{4.} INSERT ONE OF THE FOLLOWING NUMBER DESIGNATORS TO DEFINE THE MINIBAND® OPTION REQUIRED:
"1" - FOR NO MINIBAND® SUPPLIED
"2" - FOR MINIBAND® SUPPLIED LOOSE
(CONSULT FACTORY FOR INSTALLATION TOOLS.)
- ^{5.} INSERT THE LETTER "S" FOR ASSEMBLY SUPPLIED WITH MALE SCREW LOCK HARDWARE (OMIT IF NOT REQUIRED)
- ^{6.} INSERT THE LETTER "R" FOR ASSEMBLY SUPPLIED WITH EMI/RFI GASKET (OMIT IF NOT REQUIRED)

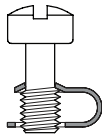
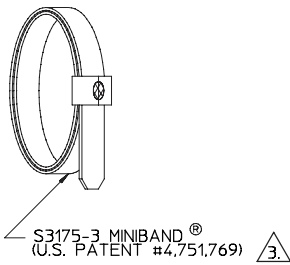


Web link to Sunbank
www.sunbankcorp.com

EXAMPLE PART NUMBER

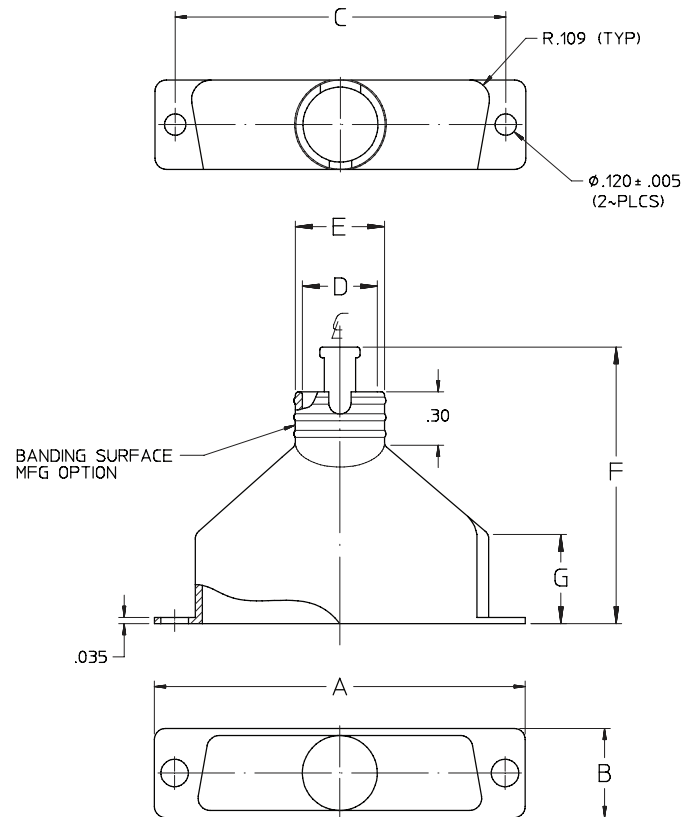


SHELL SIZE	A ±.015 DIM	B ±.015 DIM	C ±.005 DIM	D ±.010 DIA	E ±.015 DIA	F ±.030 DIA	G ±.010 DIA
9	1.203	.500	.984	.270	.350	1.190	.440
15	1.531	.500	1.312	.395	.475	1.270	.440
25	2.078	.500	1.852	.420	.500	1.550	.500
37	2.718	.500	2.500	.420	.500	1.690	.500
50	2.625	.609	2.406	.529	.609	1.670	.440
104	2.730	.670	2.500	.529	.609	1.690	.500



MALE SCREW LOCK HARDWARE 5

PLATING LEGEND	
CODE NUMBER	FINISH
03	CADMIUM PLATE, YELLOW GOLD
04	CADMIUM PLATE, OLIVE DRAB
10	CADMIUM PLATE, BLACK
12	ELECTROLESS NICKEL
34	CADMIUM PLATE, OLIVE DRAB OVER ELECTROLESS NICKEL



NOTES:

1. IDENTIFIED PER MIL-STD-130.
- 2 MATERIAL / FINISH: ALUMINUM ALLOY / SEE PLATING LEGEND
- 3 INSERT ONE OF THE FOLLOWING NUMBER DESIGNATORS TO DEFINE TO MINIBAND® OPTION REQUIRED
 "1" - FOR NO MINIBAND® SUPPLIED.
 "2" - FOR MINIBAND® SUPPLIED.
 (CONSULT FACTORY FOR INSTALLATION TOOLS)
- 4 '-104' CONFIGURATION TO MATE WITH 104 PIN 'COMPACT D' CONNECTORS, SHELL SIZE 'F'.
- 5 INSERT ONE OF THE FOLLOWING DESIGNATORS TO DEFINE THE SCREW LOCK OPTION REQUIRED
 "-" - FOR NO SCREW LOCK SUPPLIED
 "S" - FOR SCREW LOCK SUPPLIED

Rectangular Accessories

J1738 - 45 Deg., LIGHTWEIGHT, MINI-BAND TERMINATION

Web link to Sunbank
www.sunbankcorp.com

EXAMPLE PART NUMBER

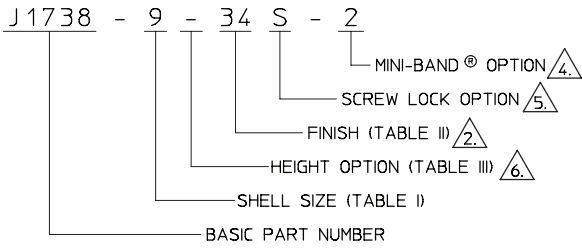
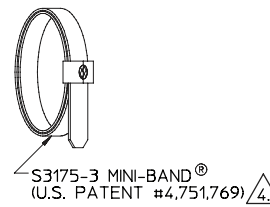
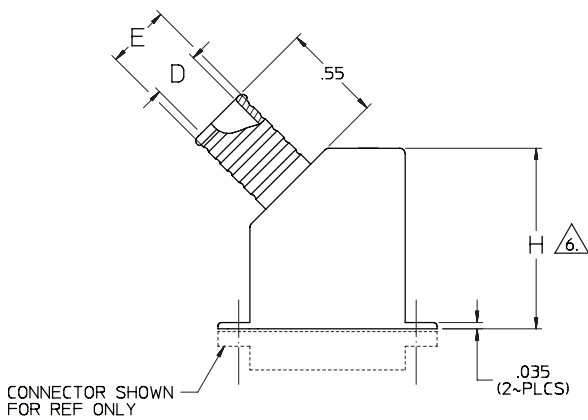


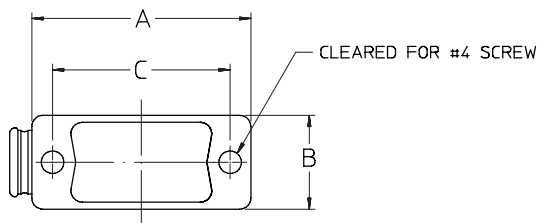
TABLE I

SHELL SIZE	A ±.015 DIM	B ±.020 DIM	C ±.005 DIM	D ±.010 DIA	E ±.010 DIA
9	1.203	.520	.984	.270	.350
15	1.531	.520	1.312	.395	.475
25	2.078	.520	1.852	.420	.500
37	2.718	.520	2.500	.420	.500
50	2.625	.629	2.406	.529	.609
104	2.730	.690	2.500	.573	.653



⁶ TABLE III

HEIGHT CODE	H MAX DIM
-	1.00
A	1.50
B	2.00
C	2.50
D	3.00
E	3.50



MALE SCREW LOCK HARDWARE ⁵

TABLE II

² CODE NUMBER	FINISH
3	CADMIUM PLATE, YELLOW
4	CADMIUM PLATE, OLIVE DRAB
12	ELECTROLESS NICKEL
34	CADMIUM PLATE, OLIVE DRAB OVER ELECTROLESS NICKEL
29	CADMIUM PLATE, CLEAR OVER ELECTROLESS NICKEL.

NOTES:

- ASSEMBLY IDENTIFIED PER MIL-STD-130.
- ² MATERIAL / FINISH: BACKSHELL - ALUMINUM ALLOY / SEE PLATING LEGEND
MINIBAND[®] - SST / PASSIVATED
SCREW LOCK CLIP - SST / N/A
SCREW LOCK SCREW - STEEL / YELLOW CHROMATE
- ³ MATES TO: MIL-C-24308 D-SUB MINIATURE CONNECTORS
- ⁴ INSERT ONE OF THE FOLLOWING NUMBER DESIGNATORS TO DEFINE THE MINIBAND OPTION REQUIRED:
"1" - FOR NO MINIBAND[®] SUPPLIED
"2" - FOR MINIBAND[®] SUPPLIED LOOSE
(CONSULT FACTORY FOR INSTALLATION TOOLS.)
- ⁵ INSERT THE LETTER "S" FOR ASSEMBLY SUPPLIED WITH MALE SCREW LOCK HARDWARE (OMIT IF NOT REQUIRED)
- ⁶ ASSEMBLY CAN BE SUPPLIED IN OPTIONAL HEIGHTS (SEE TABLE III)



Web link to Sunbank
www.sunbankcorp.com

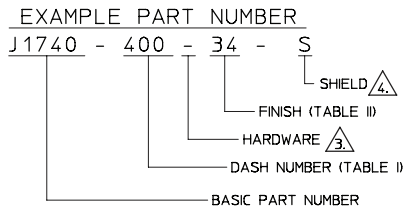
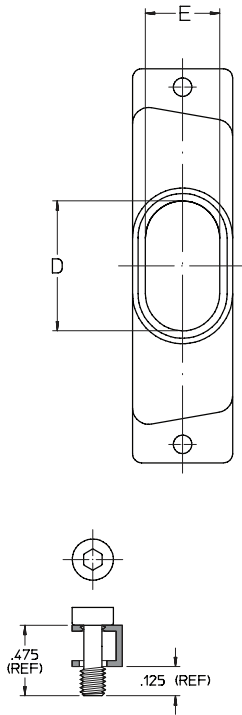
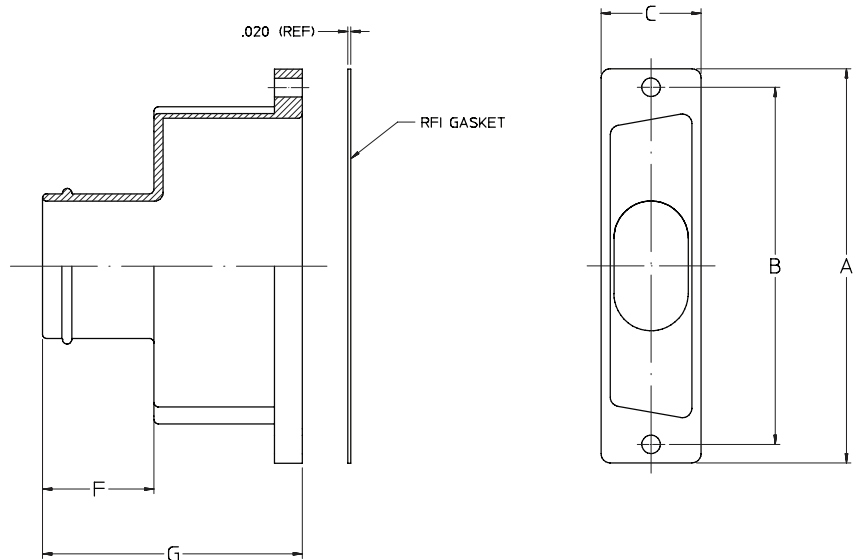


TABLE I

DASH NUMBER	CONNECTOR SIZE (REF)	A ±.031 DIM	B DIM	C MAX DIM	D DIM	E DIM	F ±.031 DIM	G ±.031 DIM
100	25	2.088	1.852	.625	.625	.375	.630	1.500
101	25	2.088	1.852	.625	.875	.375	.630	1.500
200	37	2.729	2.500	.625	.875	.375	.750	1.750
300	50	2.635	2.406	.750	.875	.500	.750	1.750
400	15	1.541	1.312	.625	.281	.281	.630	1.500
500	9	1.213	.984	.625	.188	.188	.500	1.250

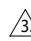


MOUNTING HARDWARE 



NOTES:

- ASSEMBLY IDENTIFIED PER ML-STD-130
- MATERIAL / FINISH: BACKSHELL - ALUMINUM ALLOY / SEE TABLE II
GASKET - MONEL NEOPRENE / N/A
SUNBAND® - SST / PASSIVATED
SHIELD - COPPER / TINNED
HARDWARE - SST / PASSIVATED

 INSERT ONE OF THE FOLLOWING NUMBER DESIGNATORS TO DEFINE THE MOUNTING HARDWARE REQUIREMENT:
"H" - ASSEMBLY WITH HARDWARE.
"L" - ASSEMBLY LESS HARDWARE.

 ADD THE LETTER "S" TO RECEIVE 6' MIN. LENGTH SHIELD SECURED TO BACKSHELL WITH A SUNBAND® (NOT SHOWN) (OMIT IF NOT REQUIRED)

TABLE II

CODE NUMBER	FINISH
01	IRIDITE, NO. 14-2, YELLOW/GOLD
12	ELECTROLESS NICKEL
34	CADMIUM PLATE, OLIVE DRAB, OVER ELECTROLESS NICKEL

Rectangular Accessories

J1742 - 45 Deg. LIGHTWEIGHT MINI-BAND TERMINATION, WITH STRAP OR LACE TYPE STRAIN RELIEF, FOR MIL-C-

Web link to Sunbank
www.sunbankcorp.com

EXAMPLE PART NUMBER

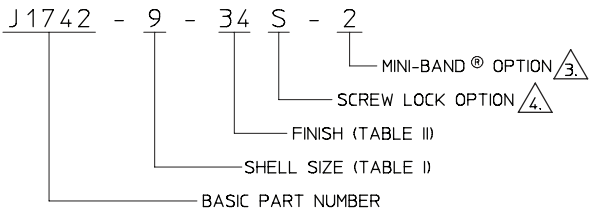
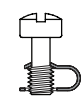
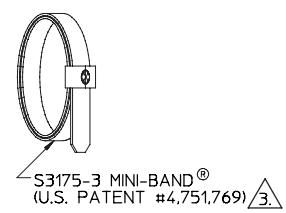
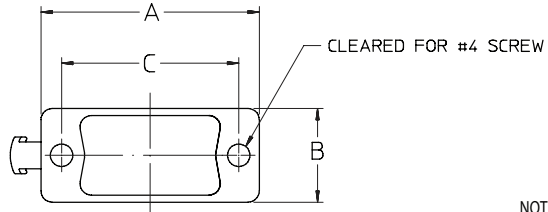
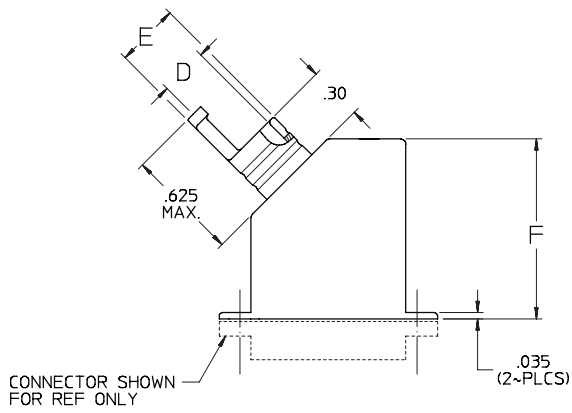
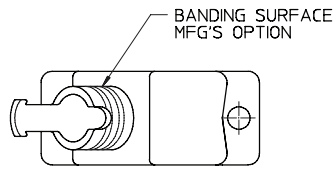


TABLE I

SHELL SIZE	A ±.015 DIM	B ±.015 DIM	C DIM	D ±.010 DIA	E ±.010 DIA	F MAX DIA
9	1.203	.520	.984	.270	.350	1.000
15	1.531	.520	1.312	.395	.475	1.000
25	2.078	.520	1.852	.420	.500	1.000
37	2.718	.520	2.500	.420	.500	1.000
50	2.625	.629	2.406	.529	.609	1.125



MALE SCREW LOCK HARDWARE (4)

TABLE II

CODE NUMBER	FINISH
4	CADMIUM PLATE, OLIVE DRAB
12	ELECTROLESS NICKEL
34	CADMIUM PLATE, OLIVE DRAB OVER ELECTROLESS NICKEL

NOTES:

- ASSEMBLY IDENTIFIED PER MIL-STD-130.
- MATERIAL / FINISH: BACKSHELL - ALUMINUM ALLOY / SEE TABLE II
MINIBAND® - SST / PASSIVATED
SCREW LOCK CLIP - SST / N/A
SCREW LOCK SCREW - STEEL / YELLOW CHROMATE
- INSERT ONE OF THE FOLLOWING NUMBER DESIGNATORS TO DEFINE THE MINIBAND® OPTION REQUIRED:
"1" - FOR NO MINIBAND® SUPPLIED
"2" - FOR MINIBAND® SUPPLIED LOOSE
(CONSULT FACTORY FOR INSTALLATION TOOLS.)
- INSERT THE LETTER "S" FOR ASSEMBLY SUPPLIED WITH MALE SCREW LOCK HARDWARE
(OMIT IF NOT REQUIRED)



Web link to Sunbank
www.sunbankcorp.com

EXAMPLE PART NUMBER

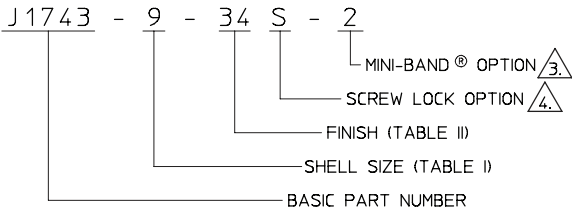
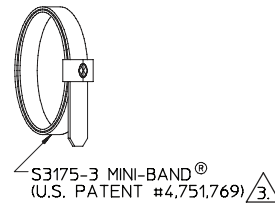
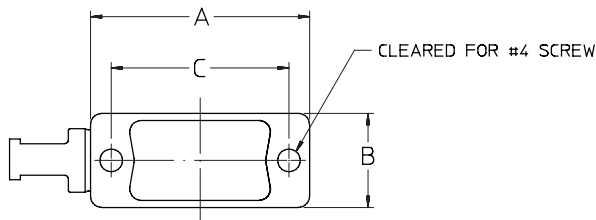
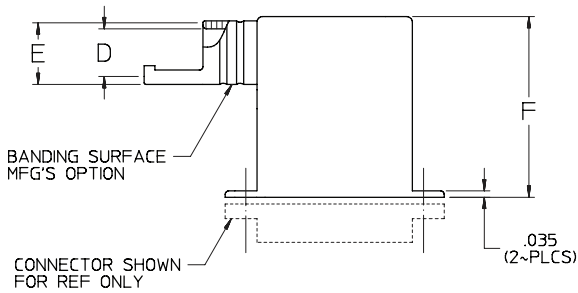
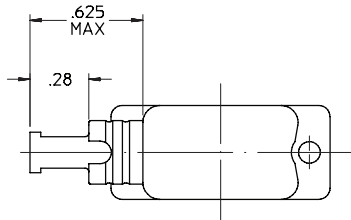


TABLE I

SHELL SIZE	A ±.015 DIM	B ±.015 DIM	C DIM	D ±.015 DIA	E ±.010 DIA	F ±.062 DIM
9	1.203	.520	.984	.270	.350	1.000
15	1.531	.520	1.312	.395	.475	1.125
25	2.078	.520	1.852	.420	.500	1.188
37	2.718	.520	2.500	.420	.500	1.188
50	2.625	.629	2.406	.529	.609	1.312



MALE SCREW LOCK HARDWARE 4.

TABLE II

CODE NUMBER	FINISH
4	CADMIUM PLATE, OLIVE DRAB
12	ELECTROLESS NICKEL
34	CADMIUM PLATE, OLIVE DRAB OVER ELECTROLESS NICKEL

NOTES:

- ASSEMBLY IDENTIFIED PER MIL-STD-130.
- MATERIAL / FINISH: BACKSHELL - ALUMINUM ALLOY / SEE TABLE II
MINIBAND[®] - SST / PASSIVATED
SCREW LOCK CLIP - SST / N/A
SCREW LOCK SCREW - STEEL / YELLOW CHROMATE

3. INSERT ONE OF THE FOLLOWING NUMBER DESIGNATORS TO DEFINE THE MINIBAND[®] OPTION REQUIRED:
"1" - FOR NO MINIBAND[®] SUPPLIED
"2" - FOR MINIBAND[®] SUPPLIED LOOSE
(CONSULT FACTORY FOR INSTALLATION TOOLS.)

4. INSERT THE LETTER "S" FOR ASSEMBLY SUPPLIED WITH MALE SCREW LOCK HARDWARE
(OMIT IF NOT REQUIRED)

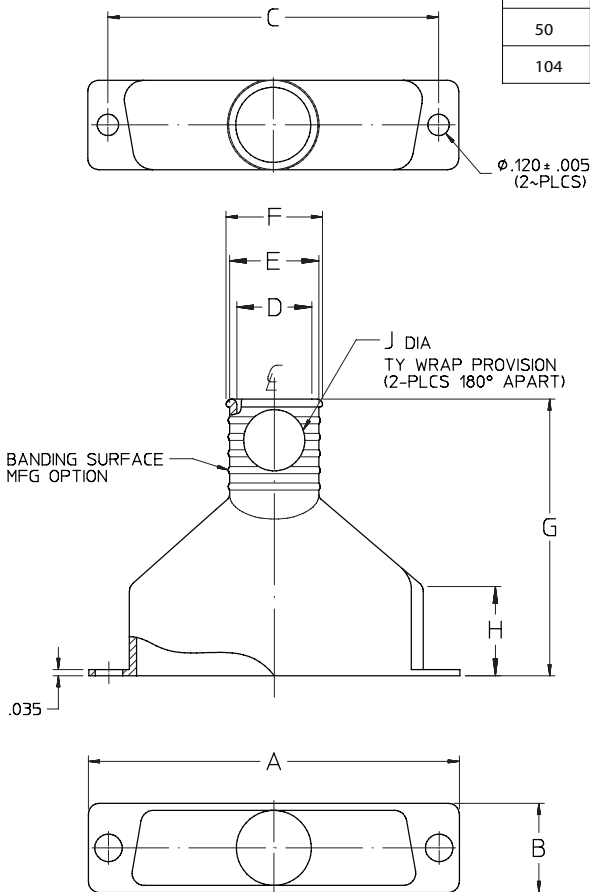
Rectangular Accessories

J1747 - LIGHTWEIGHT SUNBAND INDIVIDUAL SHIELD TERMINATION, WITH STRAP OR LACE TYPE STRAIN RELIEF

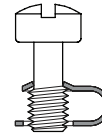
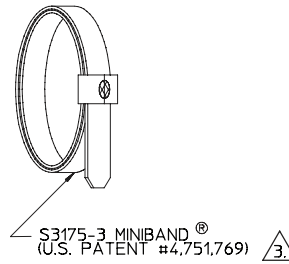
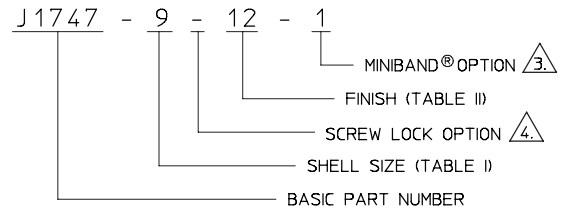
Web link to Sunbank
www.sunbankcorp.com

TABLE I

SHELL SIZE	A ±.015 DIM	B ±.015 DIM	C ±.005 DIM	D ±.010 DIA	E ±.015 DIA	F ±.010 DIA	G ±.030 DIA	H ±.010 DIA	J ±.010 DIA
9	1.203	.500	.984	.270	.350	N/A	1.190	.440	.219
15	1.531	.500	1.312	.395	.475	.515	1.270	.440	.312
25	2.078	.500	1.852	.420	.500	.540	1.550	.500	.343
37	2.718	.500	2.500	.420	.500	.540	1.690	.500	.343
50	2.625	.609	2.406	.529	.609	.649	1.670	.440	.343
104	2.730	.670	2.500	.573	.653	.693	1.690	.500	.343



EXAMPLE PART NUMBER



MALE SCREW LOCK HARDWARE 4

TABLE II

CODE NUMBER	FINISH
03	CADMIUM PLATE, YELLOW GOLD
04	CADMIUM PLATE, OLIVE DRAB
10	CADMIUM PLATE, BLACK
12	ELECTROLESS NICKEL
34	CADMIUM PLATE, OLIVE DRAB OVER ELECTROLESS NICKEL

NOTES:

- IDENTIFIED PER MIL-STD-130.
- MATERIAL / FINISH: ALUMINUM ALLOY / SEE TABLE II
- INSERT ONE OF THE FOLLOWING NUMBER DESIGNATORS TO DEFINE TO MINIBAND® OPTION REQUIRED
"1" - FOR NO MINIBAND® SUPPLIED.
"2" - FOR MINIBAND® SUPPLIED.
(CONSULT FACTORY FOR INSTALLATION TOOLS)
- INSERT ONE OF THE FOLLOWING DESIGNATORS TO DEFINE THE SCREW LOCK OPTION REQUIRED
"." - FOR NO SCREW LOCK SUPPLIED
"S" - FOR SCREW LOCK SUPPLIED



Web link to Sunbank
www.sunbankcorp.com

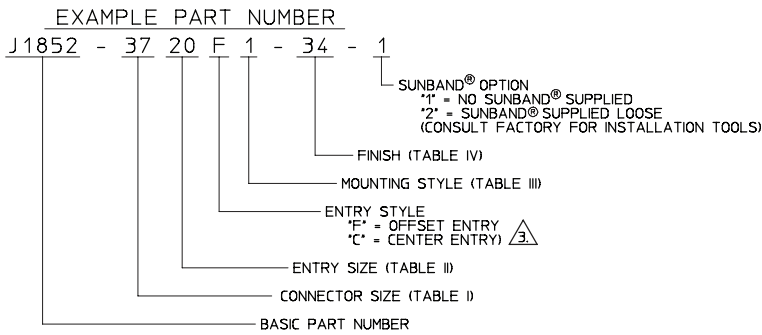


TABLE I

CONNECTOR SIZE	A ±.013 DIM	B ±.010 DIM	C MIN DIM	D DIM	E ±.03 DIM	MAX ENTRY SIZE
9	1.241	.984	.635	.515	N/A	10
15	1.569	1.312	.958	.515	N/A	16
25	2.116	1.852	1.500	.515	.34	20
37	2.757	2.500	2.147	.515	.66	20
50	2.663	2.406	2.053	.625	.62	20
104	2.757	2.500	2.147	.688	.66	20

TABLE II

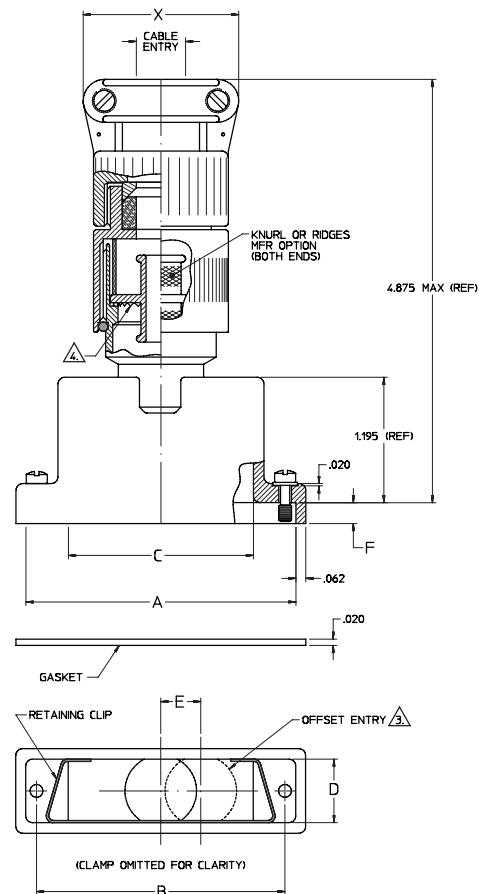
ENTRY SIZE	CABLE RANGE		X MAX DIA
	MIN	MAX	
10	.350	.625	1.332
12	.500	.750	1.551
16	.625	.938	1.770
20	.875	1.250	2.113

TABLE III

DASH NUMBER	CONNECTOR MOUNTING STYLE	F (REF) DIM
1	FRONT MOUNTING WITH GASKET	.343
2	REAR MOUNTING WITH GASKET (.031 PANEL)	.247
3	REAR MOUNTING WITH GASKET (.047 PANEL)	.231
4	REAR MOUNTING WITH GASKET (.062 PANEL)	.216
5	REAR MOUNTING WITH GASKET (.093 PANEL)	.185
6	REAR MOUNTING WITH GASKET (.104 PANEL)	.174
7	REAR MOUNTING WITH GASKET (.125 PANEL)	.153
8	REAR MOUNTING WITH GASKET (.156 PANEL)	.122
9	REAR MOUNTING LESS GASKET (.031 PANEL)	.267
10	REAR MOUNTING LESS GASKET (.047 PANEL)	.251
11	REAR MOUNTING LESS GASKET (.062 PANEL)	.236
12	REAR MOUNTING LESS GASKET (.093 PANEL)	.205
13	REAR MOUNTING LESS GASKET (.104 PANEL)	.194
14	REAR MOUNTING LESS GASKET (.125 PANEL)	.173
15	REAR MOUNTING LESS GASKET (.156 PANEL)	.142

TABLE IV

CODE NUMBER	FINISH
12	ELECTROLESS NICKEL
34	CADMIUM PLATE, OLIVE DRAB OVER ELECTROLESS NICKEL



NOTES:

- ASSEMBLY IDENTIFIED PER MIL-STD-130
 - MATERIAL / FINISH:
ADAPTER COMPONENTS - ALUMINUM ALLOY / SEE TABLE IV
HARDWARE - SST / PASSIVATED
ELASTOMERS - NEOPRENE / N/A
GASKET - MONEL NEOPRENE / N/A
WASHER - TEFLON / N/A
BAND RING - ALUMINUM ALLOY / ELECTROLESS NICKEL
- Δ 3. OFFSET ENTRY AVAILABLE FOR CONNECTOR SIZES 25 THRU 104 ONLY. SEE "E", TABLE I.
- Δ 4. ANTI-ROTATION TEETH TO PREVENT RING MOVEMENT.

