

**T200 Series Portable thermal transfer printers**

The T200 series of printers are portable/desktop thermal transfer printers with a 4.1" print head offering an economical option for low volume customers who want to take advantage of thermal transfer printing technology. Their small, light weight design makes them ideal for applications requiring portability or in environments with multiple workstations where space is limited.

The T208M has a 200 dpi printhead; the T2 12M has a 300 dpi printhead for crisp, high quality text, barcodes and graphic images. Both printers are designed for use with Tyco Electronics range of TMS heat shrinkable wire marker sleeves and limited thermal transfer printable pressure sensitive label products.

T200 series printers are available with optional label spindle accessory. It externally holds a roll of labels on 3" core for easy dispensing.



**Printer Specifications**

Print head width	104mm (4.09")
Print head resolution	T208M: 8dpmm (203 dpi) T2 12M: 12dpmm (305 dpi)
Print speed (maximum)	5 1mm/sec (2 inch/sec)
Media sensor	Transmissive (fixed) Reflective (fixed)
Memory	T208M: 256KB SRAM and 5 12KB Flash T2 12M: 5 12KB SRAM and 1MB Flash
Communication interface	Parallel (Centronics), serial (RS232), and USB
Printer dimensions	200mm W x 247mm D x 171mm H (7.9" W x 9.75" D x 6.75" H)
Printer weight	1.81 kg (4 lbs)
Shipping weight	4 kg (9 lbs)

**Media Specifications**

Maximum print width	104mm (4.09")
Maximum media width	118mm (4.65")
Minimum media width	28mm (1.12")
Maximum media roll diameter	127mm (5.0")
Media core diameter	25mm (1.0")
Ribbon wind	Ink side out

**Product Order Code**

T208M-PRINTER
T208M-C-PRINTER
T2 12M-PRINTER
T2 12M-C-PRINTER
T200-LABEL-SPINDLE

**Description**

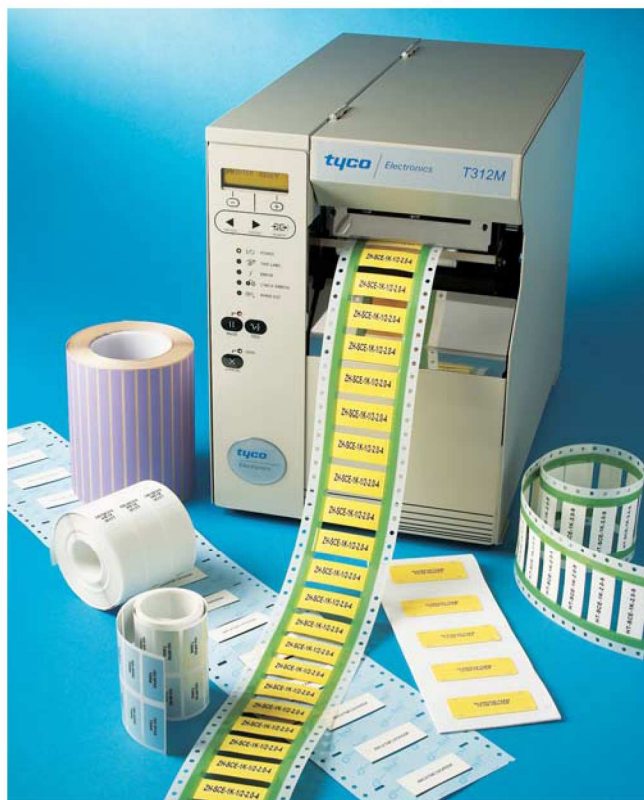
T208M thermal printer - standard
T208M thermal printer - cutter option
T2 12M thermal printer - standard
T2 12M thermal printer - cutter option
External label roll holder for T200 printers

## T300 Series High performance, cost effective thermal transfer printers

The T300 series printers are high performance, yet cost effective thermal transfer printers with a 4.1" printhead. The rugged and durable all metal construction makes them suitable for demanding industrial and commercial environments. The enhanced memory and 32 bit processor provide fast data processing and print speeds. Optional accessories are available for added convenience and efficiency.

The T308S and T308SN have a 200 dpi printhead for use with the Tyco Electronics range of thermal transfer printable pressure sensitive label products. The T308SN provides network capability for real time connectivity with the printer. With such connectivity, print jobs can be modified from any location over the Internet via Web-based tools. The T308SN printer is also capable of sending alerts via email enabled wired or wireless devices.

The 300 dpi printhead on the T312S, T312M and T312Z produces crisp, high quality text, barcodes and graphic images. The T312S and T312Z are for use with Tyco Electronics thermal transfer printable pressure sensitive label products. The color-coded operator cues and auto-calibration features make T312Z an affordable yet easy to use label printing system. The T312M is designed for use with Tyco Electronics TMS and HSI wire marker sleeves, as well as thermal transfer pressure sensitive label products.



### Printer specifications

Print head width	104mm (4.09")
Print head resolution	T308S: 8dpm (203 dpi) T312M/T312S/T312Z*: 12dpm (305 dpi)
Print speed (maximum)	T308S/T312M/T312S: 203mm/sec (8 inch/sec) T312Z*: 154mm/sec (6 inch/sec)
Media sensor	Transmissive - adjustable Reflective (fixed)
Memory	T308S/T312M/T312S: 6MB DRAM and 2MB Flash T308SN: Additional 8MB flash memory in PCMCIA socket T312Z*: 4MB DRAM and 1MB Flash
Communication interface	Bi-directional parallel (Centronics) and serial (RS232)
Printer dimensions	T308S/T312M/T312S: 283mm W x 495mm D x 394mm H (11.2" W x 19.5" D x 15.5" H) T312Z*: 278mm W x 475mm D x 338mm H (10.93" W x 18.69" D x 13.32" H)
Printer weight	T308S/T312M/T312S: 25kg (55 lbs) T312Z*: 15kg (32.4 lbs)
Shipping weight	T308S/T312M/T312S: 29kg (63 lbs) T312Z*: 22kg (49 lbs)

### Media Specifications

Maximum print width	104mm (4.09")
Maximum media width	114mm (4.48")
Minimum media width	T308S/T312M/T312S: 20mm (0.76") T312Z*: 25.4mm (1.0")
Maximum media roll diameter	203mm (8.0")
Media core diameter	76mm (3.0")
Ribbon wind	Ink side out

### Product order code

T308S-PRINTER	T308S thermal printer - standard
T308S-C-PRINTER	T308S thermal printer - cutter option
T308S-R-PRINTER	T308S thermal printer - internal rewind option
T308SN-PRINTER	T308S thermal printer - network capabilities
T312S-PRINTER	T312S thermal printer - standard
T312S-C-PRINTER	T312S thermal printer - cutter option
T312S-R-PRINTER	T312S thermal printer - internal rewind option
T312M-PRINTER	T312M thermal printer - standard
T312M-R-PRINTER	T312M thermal printer - internal rewind option
T312Z-PRINTER	T312Z thermal printer - standard*
T312Z-P-PRINTER	T312Z thermal printer - passive peel* option

\*Not available in Europe, Middle East or Africa

**T400 Series High performance and high speed thermal transfer printers**

The T400 series printers are high performance thermal transfer printers with narrow to wide printheads suitable for variety of mission critical applications. The rugged and durable metal construction makes them a top choice for demanding industrial and commercial needs.

The enhanced memory and dual 32-bit processor provide extremely fast data processing and print speeds. T400 series printers are the best option for high volume and 24 hour duty cycles. High speed of 12 inch/sec on T408M printers is well suited for the applications in which labels are needed quickly, either on demand or in batches. With the highest print resolution of 600 dpi printhead on the T424S produces unmatched quality of crisp, high quality text, barcodes and graphic images in a limited space - ideal for printing linear and 2-dimensional barcodes.

The T408M is designed for use with Tyco Electronics TMS and HSI wire marker sleeves, as well as thermal transfer pressure sensitive label products. The T424S is ideal for use with Tyco Electronics thermal transfer printable pressure sensitive label products.



**Printer specifications**

Print head width	T408M: 128mm (5.04") T424S*: 81mm (3.2")
Print head resolution	T408M: 8dpmm (203 dpi) T424S*: 23.5dpmm (600 dpi)
Print speed (maximum)	T408M: 305mm/sec (12inch/sec) T424S: 102mm/sec (4inch/sec)
Media sensor	Transmissive and reflective Reflective (fixed)
Memory	16MB SDRAM and 4MB Flash
Communication interface	Bi-directional parallel (Centronics), serial (RS232), and USB 2.0
Printer dimensions	T408M: 283.2mm W x 495.3mm D x 393.7mm H (11.15" W x 19.5" D x 15.5" H) T424S*: 263.5mm W x 495.3mm D x 393.7mm H (10.37" W x 19.5" D x 15.5" H)
Printer weight	T408M: 25kg (55 lbs) T424S*: 22.7kg (50 lbs)
Shipping weight	T408M: 29kg (63 lbs) T424S*: 27kg (59 lbs)

**Media Specifications**

Maximum print width	T408M: 128mm (5.04") T424S*: 81mm (3.2")
Maximum media width	T408M: 140mm (5.51") T424S*: 114mm (4.5")
Minimum media width	T408M: 40mm (1.57") T424S*: 20mm (0.76")
Maximum media roll diameter	203mm (8.0")
Media core diameter	76mm (3.0")
Ribbon wind	Ink side out

**Product order code**

T408M-PRINTER	
T408M-R-PRINTER	

**Description**

T408M thermal printer - standard
T408M thermal printer - internal rewind option

T424S-PRINTER
---------------

T424S thermal printer - standard*
-----------------------------------

\*Not available in Europe, Middle East or Africa

T400 Series printers are available with wider printhead configurations for speciality identification applications. Contact Tyco Electronics for such product requirements.

## T612M-DS Double sided thermal transfer printer

Specifically designed by Tyco Electronics, the T6 12M-DS printer answers a common need in heat-shrinkable wire and cable identification markers: single-pass printing onto both the front and back side of the markers simultaneously. Specifically developed and modified by Tyco Electronics for this application, the T6 12M-DS is a high duty cycle, industrially robust thermal transfer printer. It will print onto the complete range of TMS System Six heat-shrinkable markers in all sizes from  $\frac{3}{32}$ " (2.4 mm) to  $2\frac{1}{4}$ " (57.2 mm). The data printed onto the two sides of each marker can be identical or different, same side up or flipped.



### Printer specifications

Print head width	128 mm (5.04")
Print head resolution	12 dpmm (304 dpi)
Print speed (maximum)	50 to 128 mm per second (2 [recommended] to 5 inches per second)
Media sensor	Transmissive and gap
Memory	12MB DRAM and 1 MB flash
Communication interface	Parallel (centronics) and serial (RS232/422)
Printer dimensions	559 mm W x 432 mm D x 508 mm H (22" W x 17" D x 20" H)
Printer weight	38 kg (84 lbs)
Shipping weight	51 kg (112 lbs)

### Media specifications

Maximum print width	112 mm (4.4")
Maximum media width	117 mm (4.625")
Maximum media roll diameter	254 mm (10.0")
Media core diameter	26 mm (3.0")
Ribbon wind	Ink side out

### Product order code

T6 12M-DS-PRINTER

### Description

Tyco Electronics T6 12M-DS thermal printer – standard