

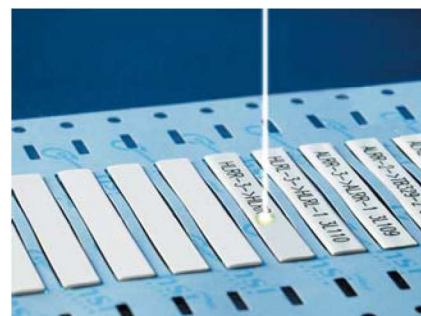
## LMS-9000 Laser marker

The LMS-9000 laser marker is a low maintenance laser marking system designed for high volume users. It is a highly automated system including cutting to length, postmark rewinding and double sided, one step sleeve marking.

Integrated with WinTotal marker sleeve/label marking software, it is designed for Tyco Electronics wire identification sleeves and selected labels.

## Features and benefits

- Simultaneous double-sided laser marking option for marker sleeves saves considerable time and eliminates any margin for error.
- Optional handling system designed to handle several Tyco Electronics products.
- Laser marking and cutting for kitting in one integrated step eliminates post print cutting and kitting.
- Virtually no product wastage during marking, thanks to a state of the art product recognition and jogging system.
- Optional scoring and marking feature for label products.
- Modular design for easy placement and re-installation.
- Fully integrated software and hardware.
- On screen diagnostics.
- Meets all relevant US and European laser equipment standards.
- Laser parameters pre-set and software controlled.



Product order code	Description
LMS-9000	Tyco Electronics LMS-9000 laser – standard <i>*Please contact your local Tyco Electronics representative for product configuration per your application.</i>

## SPECIAL NOTE:

Tyco Electronics also offers a pre-printing service to customers who need high quality, durable, permanent laser markers, yet do not want to invest in the purchase of LMS-9000 equipment at this time. All pre-printed laser markers, labels or tags are produced to out exacting quality, manufacturing standards and meet applicable mark permanence specifications. A variety of System Six and HSI products including TMS-SCE, D-SCE, HT-SCE, HL, HLX. HS and HX are available for pre-print base materials along with many label materials.

Please contact your local Tyco Electronics representative to find out more about our laser pre-print services.